



© Jeffery Favero



ON THE ROAD TO

BETTER HEALTH

2016 ANNUAL REPORT of the WEBER-MORGAN HEALTH DEPARTMENT

Director's Message

Looking back on 2016, a lot of time was devoted to developing stronger community partnerships which helped us learn more about the people we serve. As a result, these collaborations have put our community on the road to better health.

We completed our *Community Health Assessment*, and used its findings to develop a *Community Health Improvement Plan*. These documents, created with input from many of our community partners, will help guide a concerted effort to address obesity, suicide prevention and teen substance abuse. Change will not happen overnight. Public health is a marathon, not a sprint. As we start pulling in the same direction, we can make a bigger difference by working together.

This report also contains the 2016 highlights of the work the Weber-Morgan Health Department does every day to protect and promote the health of residents and the environment in which we live. We are proud to share our achievements with the hope it provides a roadmap for us and others to build upon.

I'm grateful to our dedicated staff, for the support of our board members and for the involvement of our community partners who all have helped make this year a success.



Brian Bennion, Executive Director

From CHA to CHIP*

Community Health Assessment

45 Health Indicators

Priority Selection Meetings

WMHD Staff

33
Community Stakeholders

Ongoing Community Action Partnerships

Suicide Prevention



Obesity



Adolescent Substance Abuse



* Links to both documents can be found at: www.webermorganhealth.org

YMCA Partnership

- Collaborated to provide Teen Health resources and curriculum to youth in the YMCA's after-school programs.
- Held the first National Diabetes Prevention class in Northern Utah. Currently working to increase outreach, awareness, and participation in future classes.
- Combined the health department's Safe Kids Day and the YMCA's Healthy Kids Day which decreases competition and increases awareness, partnerships, and education.
- The Y of Northern Utah presented WMHD with it's Community Impact Award for our involvement and partnership that helped them extend their reach into the community.

the Y FOR US FOR US FOR US

WEBER-MORGAN HEALTH DEPARTMENT

If you're at risk to make small, measurable changes, you can reduce your risk of developing type 2 diabetes. This program is designed to help you learn how to make these changes and live a healthier life. Contact your healthcare provider for more information.

PROGRAM FEATURES

- 16 weekly sessions
- Led by a trained instructor
- A group that offers support and encouragement

ADVANCE AND ENHANCE YOUR LIFE

Diabetes Prevention Program
YMCA OF NORTHERN UTAH

CO
St
80
sm

LEARN

GROW

SAFE KIDS DAY & HEALTHY KIDS DAY
A YMCA Initiative

SATURDAY, APRIL 29TH 10AM-3PM
@ NEWGATE MALL

THE EVENT STARTS IN THE PARKING LOT BEHIND BURLINGTON

FREE ADMISSION
Learn Health and Safety Tips! Visit Inside & Outside Booths
Enjoy fun activities & Entertainment

Kids T-Shirt Giveaway (500)
Kids Bike Helmets \$5 (Cash only)
Kids Must be present!
Meet Moana and other characters!

SAFE KIDS DAY

the Y

Zero Fatalities

OGDEN CLINIC

Intermountain Health

WHEELS

Suicide Prevention

In 2016, WMHD implemented three additional suicide awareness and prevention trainings:

safeTALK: Evidenced-based training that teaches participants to identify persons with thoughts of suicide and community first aid resources to connect them to help.

Applied Suicide Intervention Skills Training (ASIST): Evidenced-based workshop for those who want to feel more comfortable, confident and competent in helping to prevent the immediate risk of suicide. Participants can earn up to 12 continuing education credits.

Working Minds: Suicide Prevention in the Workplace: A national best practice program that educates participants about mental health and suicide concerns in the workplace.

* To register for these courses, see www.webermorganhealth.org

Breastfeeding Lending Library

Breastfeeding has long been encouraged as the most inexpensive and highly nutritious means of giving babies a healthy start in life.

WIC launched its first ever breastfeeding book lending library for WIC participants interested in learning more about breastfeeding.

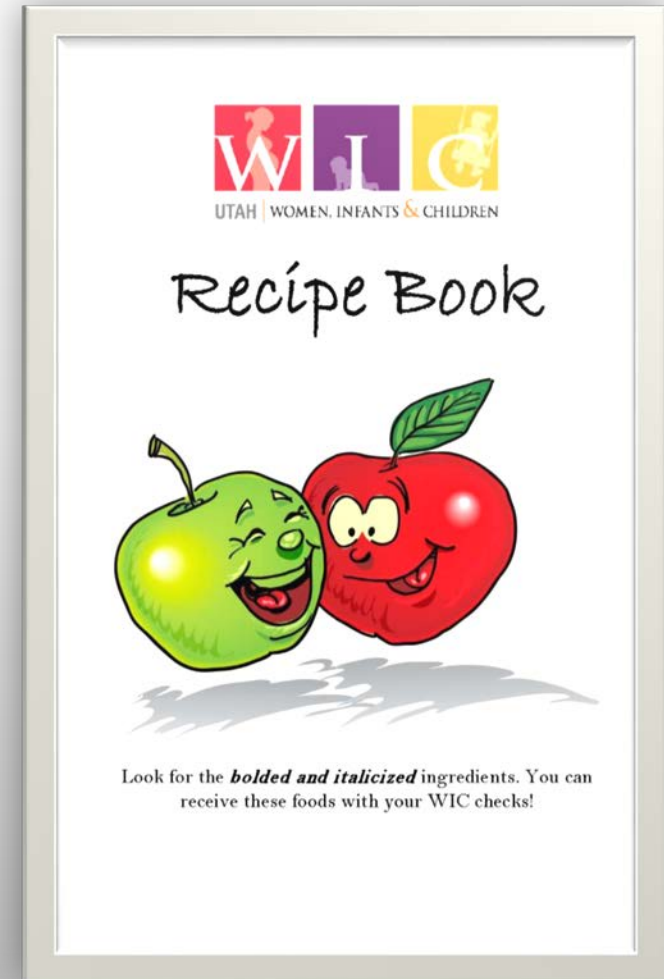
Now, in addition to many other aspects of breastfeeding support, participants can take home books on breastfeeding.



WIC Cookbook

Our Women, Infants and Children staff created and distributed a recipe book featuring foods on the WIC-approved foods list. It provided WIC participants with healthy recipes and a guide to cook and use the food provided by the program.

This idea was quickly picked up by other agencies and local health departments and has become a great resource in our community.



WMHD Top 10 Reported Diseases*

	2016	2015	2014	2013	2012
1. Chlamydia Trachomatis Infection	873	790	693	789	812
2. Hepatitis C Virus Infection, Chronic	250	260	317	246	274
3. Gonorrhea	212	144	121	90	43
4. Influenza-Associated Hospitalization	141	84	94	113	40
5. Influenza Activity	125	47	66	183	157
6. Tuberculosis, Latent Infection	105	53	61	77	52
7. Chickenpox (Varicella)	51	42	61	69	43
8. Streptococcal Disease, Invasive Other	45	27	29	34	48
9 Syphilis, Reactor	44	46	42	20	27
10. Hepatitis B Virus Infection, Chronic	42	37	44	54	55

* 5-year comparison using 2016 rankings

WMHD Top 10 Confirmed Diseases

	Disease	Reported	Actual
1.	Chlamydia Trachomatis Infection	873	871
1.	Hepatitis C Virus Infection, Chronic	250	183
1.	Gonorrhea	212	212
1.	Influenza-associated Hospitalization	141	138
1.	Influenza Activity	125	123
1.	Tuberculosis, Latent Infection	105	102
1.	Chickenpox (Varicella)	51	18
1.	Streptococcal disease, invasive, other	45	36
1.	Syphilis, reactor	44	2
1.	Hepatitis B virus infection, chronic	42	20

Renewed Focus on Old Diseases

Syphilis

All positive cases are investigated by a public health nurse with follow up at 3 months, 6 months and 1 year.

Caseload Breakdown:

- 31 males
- 29 females

- 7 under age 18
- 28 between 18-29
- 20 between 30-49
- 8 over age 50

Gonorrhea

Utah Department of Health requires testing before medication is provided. All contacts are considered cases after positive testing.

Caseload Breakdown:

- 120 males
- 89 females

- 7 under age 18
- 107 between 18-29
- 94 between 30-49
- 4 over age 50

Due to increased numbers, all nurses are epi-trained to investigate and follow up on STD cases.

Zika: Prevention & Preparedness

Transmission Risk to Utahns

- Travel to an infected area
- Sexual contact with an infected person

WMHD Nursing

- 32 investigations, 2 positive cases, all travel related
- Provided traveler education packets

Emergency Services

- 2 Plans for prevention and outbreak
- Bolsters coordination with public health, hospital and other community partners.



ICS Training for All Staff

Being ready for an emergency event at WMHD can be quite a task. This year all the staff have been working on their Incident Command System (ICS) classes. Each staff member was asked to complete online classes in ICS 100b, 200b, 700a, and 800b as well as the Strategic National Stockpile and Mass Dispensing overview classes. This training gave staff a great foundation to build on as we develop their emergency response roles and responsibilities at WMHD.

Thank you to the staff for their time and efforts. Overall, staff hit **74%** for all 6 classes. Special recognition goes to the **WIC Division for 100% completion** of all classes.

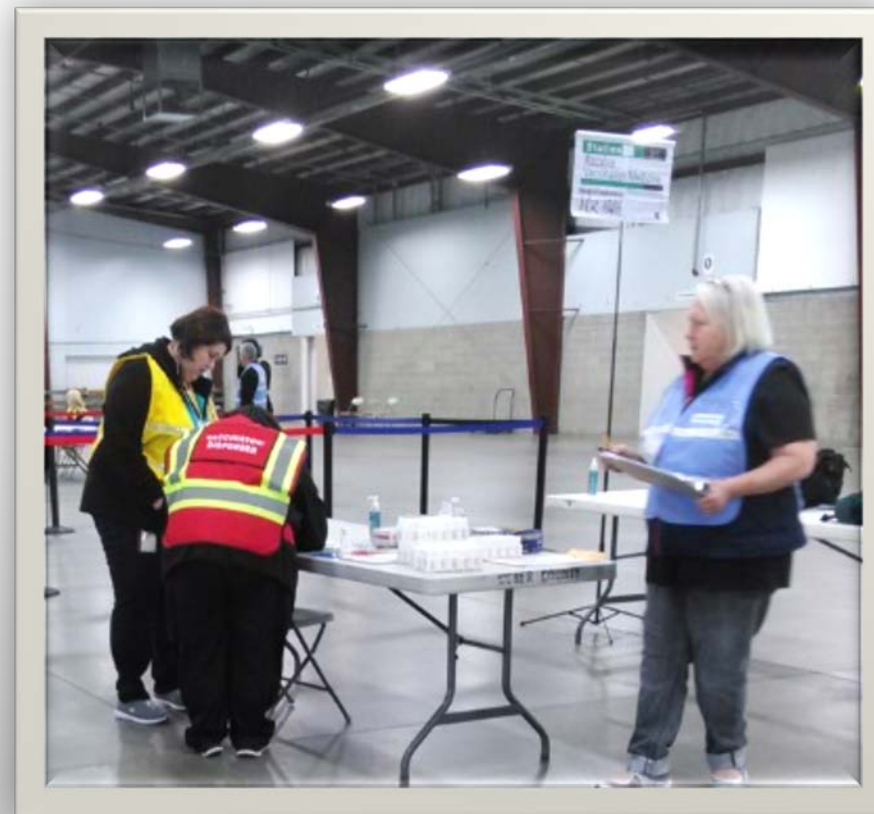
Mass Dispensing Exercise

In March, the Emergency Services staff executed a day long full-scale mass prophylaxis exercise to assess the WMHD Medical Countermeasure (MCM) Plan.

The exercise tested the activation of the regional distribution site as well as the open Point of Distribution (POD) site. Nursing, Environmental Health and Public Information helped staff the POD with assistance from Medical Reserve Corp volunteers.

Several other partner agencies assisted in the event such as Weber County Emergency Management, Weber County Sheriff's Office, and Weber School District. Participants who simulating picking up their medication included the Utah School for the Deaf & Blind.

Understanding proper site setup and patient flow was an important piece of the exercise. The MCM plan will reflect any changes that need to be made as a result of the exercise.



2016 Air Quality Improvement Plan

General Public Education

- “Idle Free Week”
- “Be Air Aware Campaign”
- “Clear the Air Challenge”
 - BYU Behavioral Design Study

Smoking Vehicle Complaints

- Education and Warning
- Testing

Wood Burning Complaints

- Education and Warning

I & M Program

- Testing Gasoline, Hybrid & Natural Gas Vehicles
- Developing a recommendation whether or not to test diesel vehicles

Active Transportation

- “Complete the Streets” Grants
 - North Ogden, Roy and South Ogden awarded \$5,000 for planning and assessments
 - Weber Trails Network maps

Committees & Partnerships

- Wasatch Front Regional Council
- UCAIR
- Weber County Active Transportation

Monitoring

- Low NOX Water Heaters
- Tier 3 Gasoline
- Ozone Standard

New Accounting System

The health department played a key role in selecting and testing Weber County's software for budgeting and payroll.

- May 2015: analyzed presentations from potential vendors
- June 2015: selected vendor; began work on chart of accounts
- July-December 2015: trained on system components; created project ledger and time codes
- January 2016: implemented financial system
- January–August 2016: modified as needed; created budget and payroll crossover
- October 2016: started payroll analysis
- November 2016: attended time sheet training
- December 2016: implemented new payroll system component
- January 2017: implemented human resource system component

2016 Budget

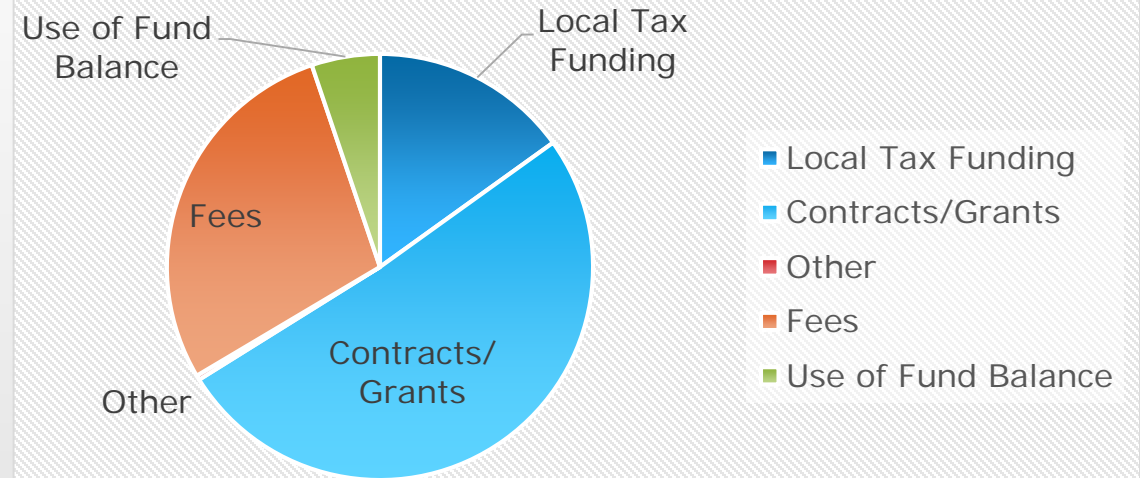
Revenue

Local Tax Funding	\$1,142,538
Contracts/Grants	\$3,864,581
Other	\$26,230
Fees	\$2,145,968
Total Revenue	\$7,179,318

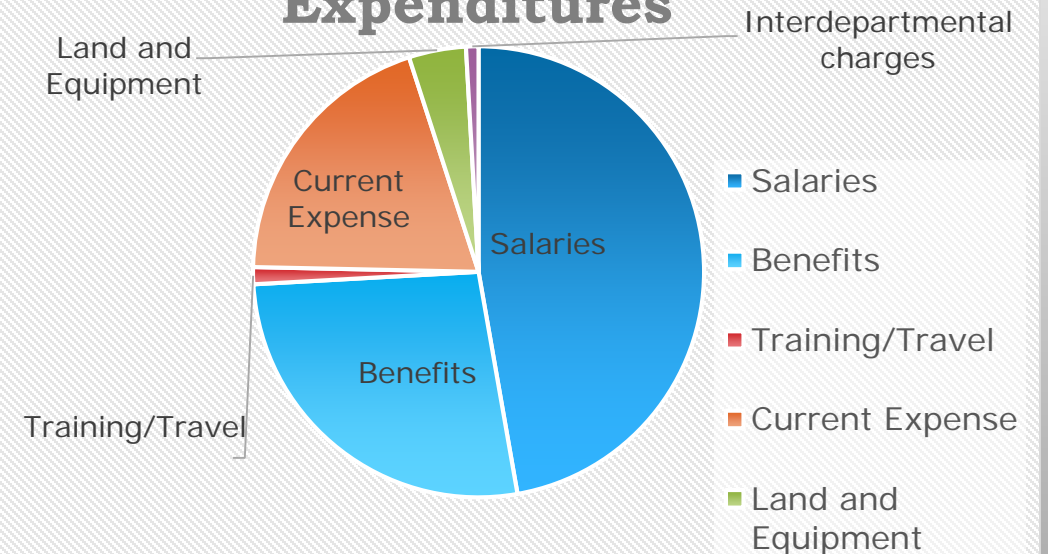
Expense

Salaries	\$3,576,444
Benefits	\$2,035,545
Training/Travel	\$92,189
Current Expense	\$1,489,960
Land and Equipment	\$310,065
Interdepartmental charges	\$67,521
Total Expense	\$7,571,724
Use of Fund Balance	-\$392,406
Beginning Fund Balance	\$3,366,123
Ending Fund Balance	\$2,973,717

Revenue



Expenditures



WMHD 2016 Statistics

ENVIRONMENTAL HEALTH DIVISION

Food Service Plans Submitted for Review	65
Food Service Permits Issues	77
Food Service Inspections	1,444
Temporary Food Inspections	615
Temporary Mass Gatherings	39
Food Service Enforcement Actions	6
Food Safety Managers Certified	131
Food Handlers Trained and/or Permitted	9,194
Food Borne Illness Complaints	37
School and Playground Inspections	86
Underground Storage Tank Inspections	45
Public Water Samples and Inspections	496
Motor Vehicle Emissions – Station Audits	678
Waste Oil Facility Inspections	63
Emergency Response Call-Outs	19
All Other Nuisance Complaint Inspections	333
Daycare Food Service Inspections	112
Public Pools and Spas Inspections	134
Public Pools Water Samples Taken	876
Wastewater Permits Issues	121
Wastewater Soil Excavations	129
Wastewater System Failures	26
New Wastewater Systems	256
Meth Contamination Properties	114

WOMEN, INFANTS, AND CHILDREN (WIC) DIVISION

*Certified Participants	6,679
*Women Who Initiated Breastfeeding	2,053
Classes Taught	581
Total Food Dollars Used for 2016	\$3,577,115
*quarterly average	

NURSING AND CLINICAL SERVICES DIVISION

Family Planning Visits	31
Baby Your Baby	268
TCM Home Visits	313
Home Visit Program Ages 0-5	234
Nurse Family Partnership Visits	994
Immunizations: Ages 0-2	997
Ages 3-6	990
Ages 7-18	2,654
Adult	4,423
STD Visits	328
HIV Testing	131
TB Testing	1,339
# of new active cases	1
Communicable Disease Investigations	2,383
Cancer Screening Exams	381
Immigration Physical Exams	59
Flu Vaccination School Clinics	2,775
Non-Flu Vaccination School Clinics	562

ADMINISTRATIVE SERVICES DIVISION

Vital Statistics	
Birth Certificates	8,975
Death Certificates	2,654
Marriage/Divorce Certificates	43
Additional/Multiple Copies	14,393
Reissues	1,637
Affidavits	169
Expedites	55

HEALTH PROMOTION DIVISION

Injury Prevention	
Car Seat Program Participants	47
Seat Belt Program Participants	1,437
Falls Injury Prevention Participants	29
Number of Suicide Training/Presentations	12
Community Members Trained in Suicide Prevention	480
Participants in Other Outreach Programs	7,090
Tobacco Programs	
Students/Community Members Reached	1,344
END Participants	37
Cessation to WIC, providers, physicians, etc.	59
Retailers Trained/Educated	296
Compliance Checks Conducted	616
Teen Health	
Abstinence Education Participants	3,941
Number of Education Partners (Teachers)	35
Personal Responsibility Education Program Participants	364
Number of Community Partners (Agencies)	18
Healthy Living	
Number of Students Reached	5,705
Healthy Childcare (TOPStar) Children Reached	2,500
Healthy Childcare (TOPStar) Childcare Providers Trained	53
Worksites that Complete a Health Risk Appraisal	3
Number of New Community Partnerships (Clinical and Community)	32
Number of Clinics Engaged in Quality Improvement Protocols	9



WEBER-MORGAN
HEALTH DEPARTMENT

