



---

# **Severe Motor Vehicle Related Crash Report Weber and Morgan Counties**

**Prepared for the Weber-Morgan Health Department**

**March 20, 2024**

**By Zachary Heuscher, MS Epidemiology**

---

## Weber County Motor Vehicle Related Severe Crashes

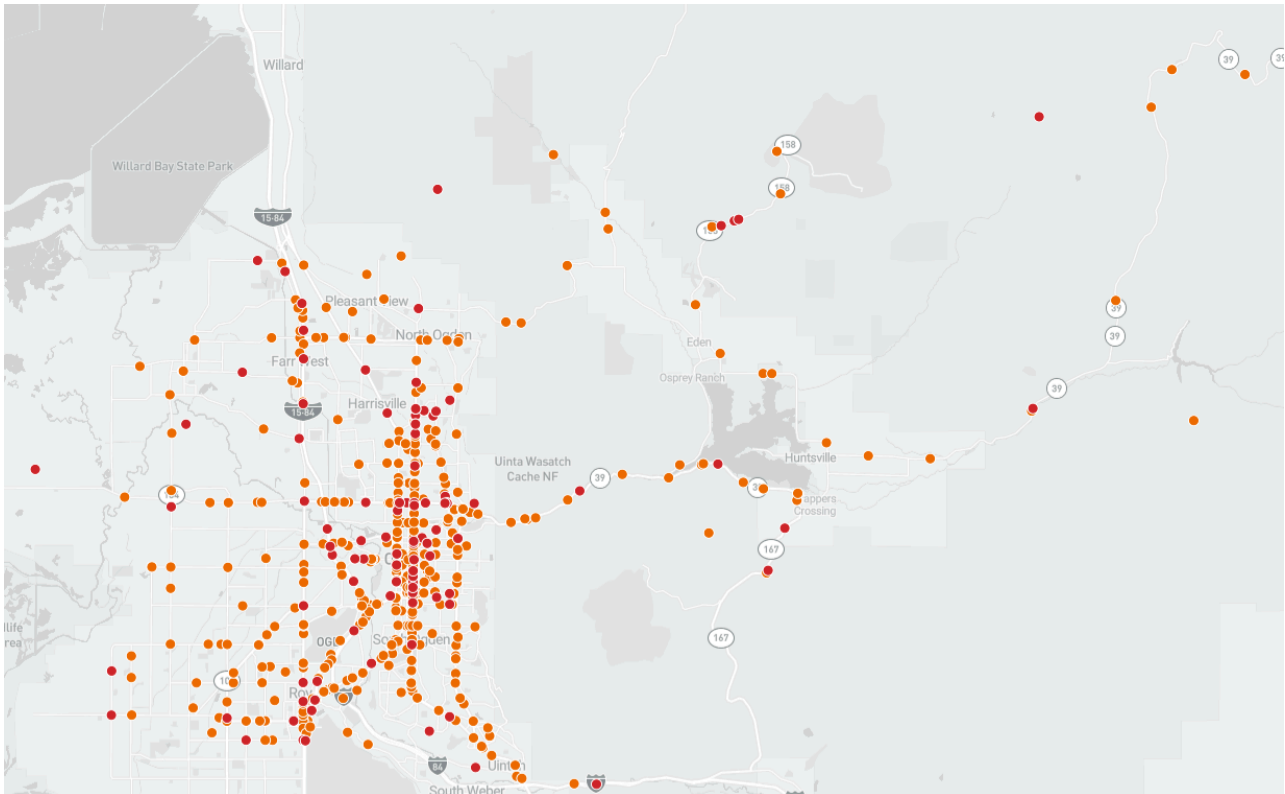


Figure 1: 581 severe motor vehicle crashes (**480 serious injuries, 101 fatal**) reported from January 1st, 2018 to December 31st, 2022 in Weber County; Source: Utah Department of Transportation (UDOT).

- Weber County: Among the 20,499 total crashes from 2018 to 2022, 2.8% (581) were severe crashes with 101 fatal and 480 suspected serious injury. Among all crashes, 23% 20 to 29 years of age and 18% were 10 to 19 years of age. Of the 581 severe crashes, 279 (48%) were intersection related, 151 (26%) roadway departure, 117 (20%) motorcycle involved, 103 (18%) speed related, 96 (16%) pedestrian involved, 81 (14%) unrestrained, 70 (12%) DUI related, 35 (6%) distracted driving, and 30 (5%) were bicycle involved.
- Roads with high concentrations of fatal motor vehicle crashes: Washington Blvd. (17 fatal), 12th street (6 fatal), and 1900 W (8 fatal).
- Current Trend: Severe crashes from March 4th, 2023 to March 3rd, 2024 (145) have increased by 25% when compared to the 5-year average (116 per year from 2018-2022) representing a \$176.8 million increase in crash costs.
- Crash Costs: Total cost for severe crashes from March 4th, 2023 to March 3rd, 2024 was \$382.9 million for suspected serious injury (123) and \$68.5 million for fatal injury (22).

## Morgan County Motor Vehicle Related Severe Crashes

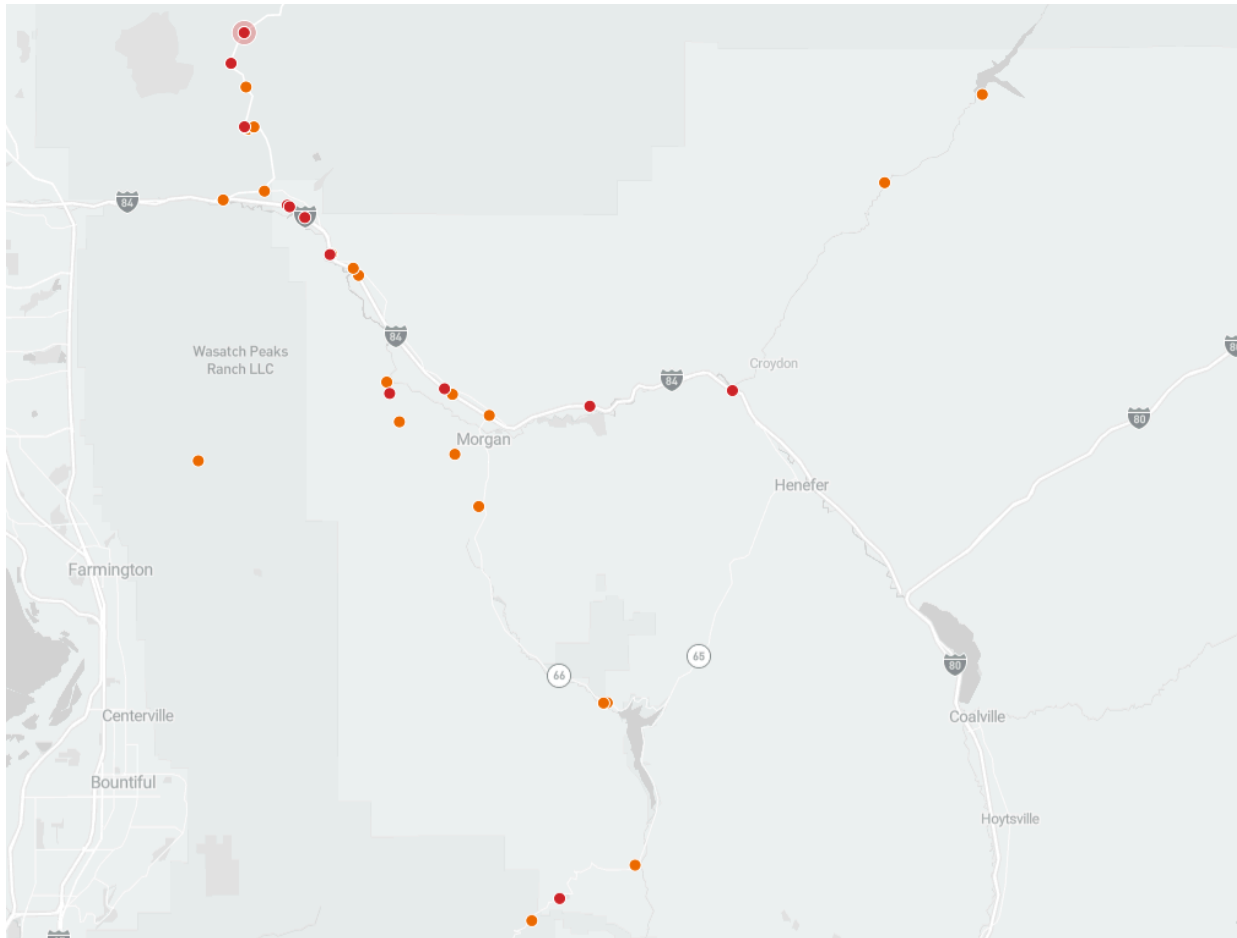


Figure 2: 37 Severe motor vehicle crashes (**23 serious injury, 14 fatal**) reported from January 1st, 2018 to December 31st, 2022 in Morgan County; Source: UDOT.

- Morgan County: Among the 1,100 total crashes from 2018 to 2022, 37 (3.3%) were severe crashes with 14 fatal and 23 suspected serious injury. Among all crashes, 21% were 20 to 29 years of age and 20% were among 10 to 19 years of age. Among the 37 severe crashes, 23 (62%) were roadway departures, 20 (54%) motorcycle involved, 13 (35%) speed related, 11 (30%) DUI related, five (13.5%) unrestrained, three intersection related (8%), and one (3%) distracted driving.
- Roads with high concentrations of fatal motor vehicle crashes: I-84 (8 fatal), and Trappers Loop Road (4 fatal)
- Current Trend: Severe crashes from March 4th, 2023 to March 3rd, 2024 (11) have increased by 49% when compared to the 5-year average (7.4 per year from 2018-2022) representing a \$14.1 million increase in crash costs.
- Crash Costs: Total cost for severe crashes from March 4th, 2023 to March 3rd, 2024 was \$24.9 million for suspected serious injury (8) and \$9.3 million for fatal injury (3).

## Motorcycle Involved Severe Motor Vehicle Related Crashes

### Suspected Serious Injury Crashes

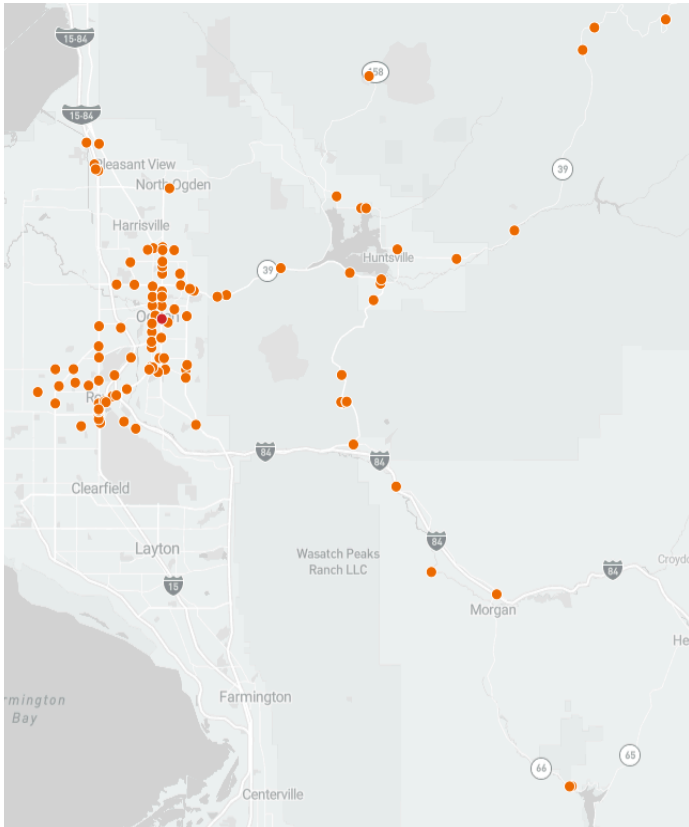


Figure 4: Serious injury motorcycle involved motor vehicle crashes (113); Source: 2018-2022, UDOT.

### Fatal Crashes

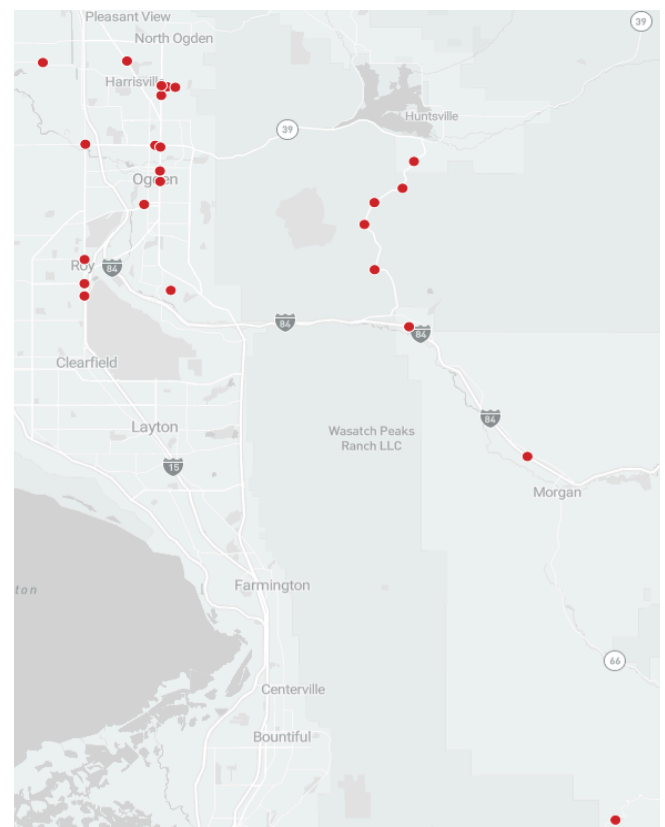


Figure 5: Fatal motorcycle involved motor vehicle crashes (26); Source: 2018-2022, UDOT

- Among the total 577 motorcycle-involved motor vehicle crashes, 20 to 29 year olds represented 27% of the crashes followed by 30 to 39 year olds at 17% .
  - 139 (24%) were severe crashes, with 26 fatal and 113 with suspected serious injuries with 57 (41%) intersection related, 37 (27%) speed related, and 18 (13%) DUI related.
- Roads with high concentrations of severe motorcycle involved motor vehicle crashes: Washington Blvd. (11 serious and 6 fatal), Trappers Loop Road (10 serious and 5 fatal), 1900 West from Midland Drive to 6000 South (10 serious and 3 fatal), and Interstate 84 from Mountain Green to Morgan (2 serious and 3 fatal).
- Trends: From 2019-2020 to 2021-2022 among motorcycle related severe crashes there was a 13% increase in speed related crashes, a 10% increase in intersection related crashes, and a 3% decrease in DUI related crashes.
- Crash Costs: For 2021-2022 the cost was \$79.3 million for severe motorcycle-involved crashes and \$12.4 million for motorcycle-involved fatal crashes, overall a 11% increase from 2019-2020.

## Pedestrian Involved Severe Motor Vehicle Related Crashes

Suspected Serious Injury Crashes

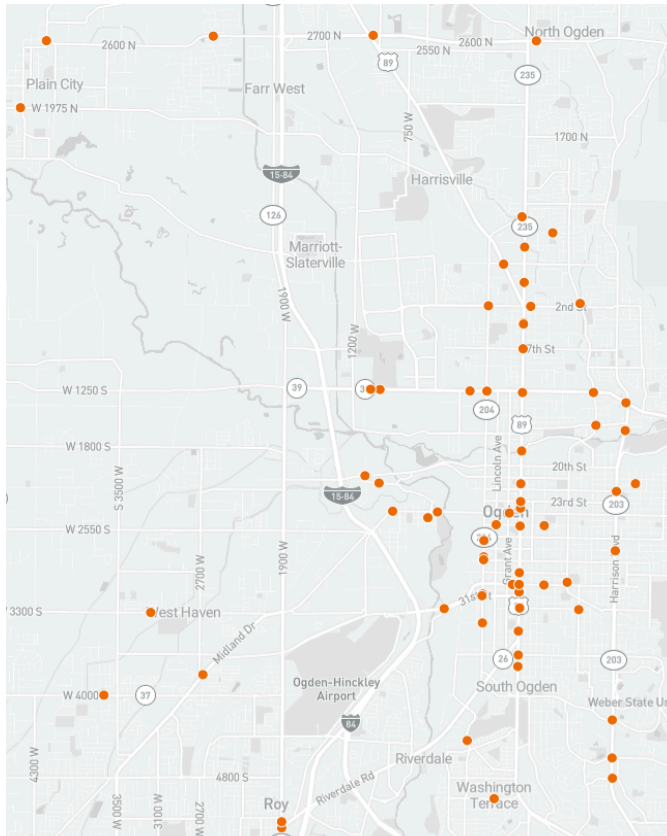


Figure 6: Suspected serious injury pedestrian-involved motor vehicle crashes (77)

Fatal Crashes

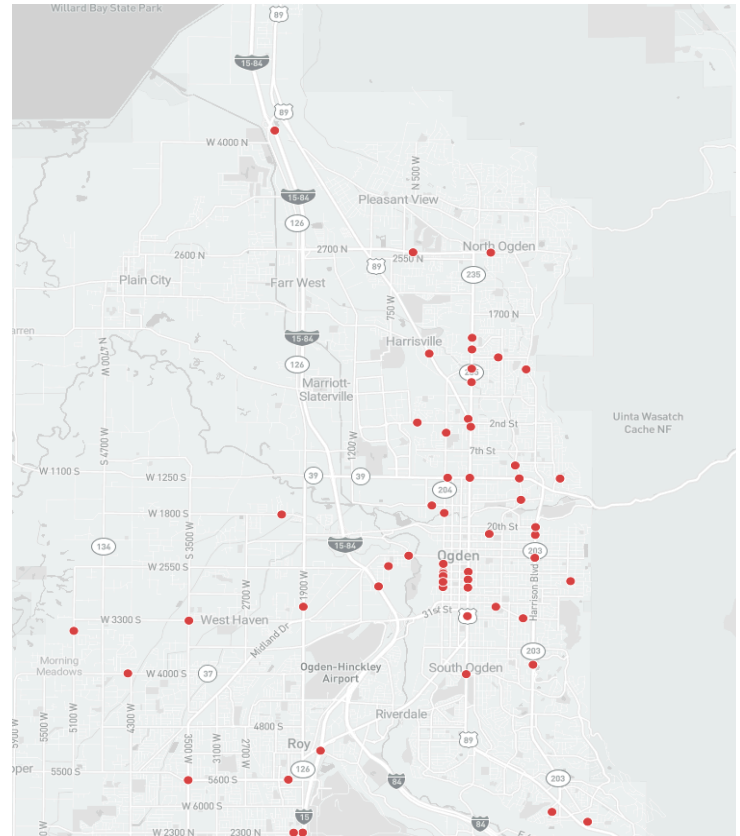


Figure 7: Fatal pedestrian-involved motor vehicle crashes (21); Source: 2018-2022, UDOT.

- Among the total 407 pedestrian-involved motor vehicle crashes, 20 to 29 year olds represented 19% of the crashes followed by 10 to 19 year olds at 17% .
  - 98 pedestrians were involved in severe crashes with 21 fatal and 77 suspected serious injury crashes with 52 (53%) intersection related (with 42% being 4-leg intersections and 8% T-intersections), 49 (49%) were from dusk to dawn, 9 (9%) DUI related, and 6 (6%) distracted driving.
- Roads with high concentrations of severe pedestrian-involved crashes: Washington Blvd. (5 fatal and 16 serious), Wall Ave. (one fatal and 9 serious), Harrison Blvd. (1 fatal and 7 serious), and 2700 North (3 serious).
- Trends: Total 2021-2022 pedestrian-vehicle severe crashes declined by 9% from 2019-2020, although speed related and distracted driving and intersection related crashes increased.
- Crash Costs: For 2021-2022 the cost was \$51.3 million for suspected serious injury pedestrian crashes and \$10.9 million for fatal pedestrian crashes, overall a 9% decrease from 2019-2020.

## Bicycle-Involved Motor Vehicle Related Crashes

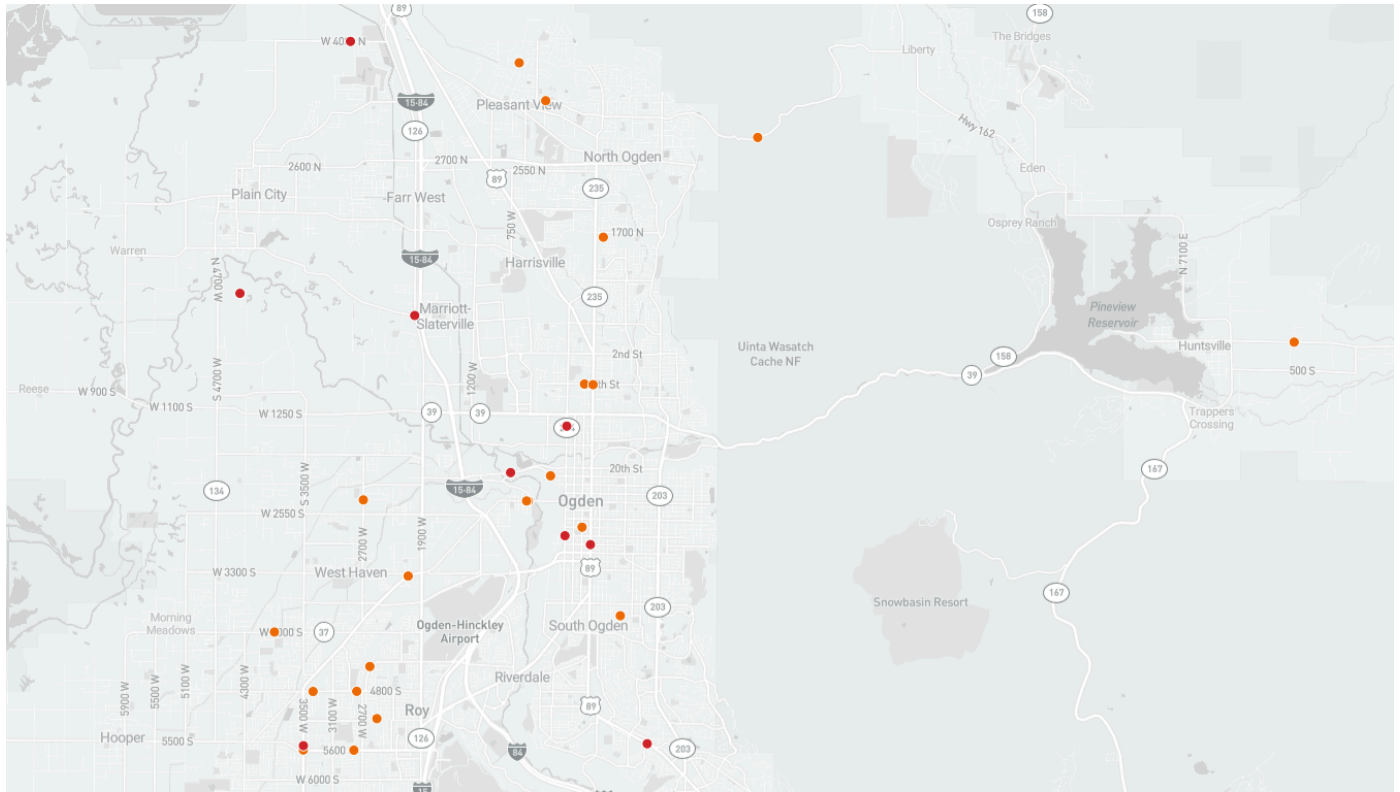


Figure 8: Severe bicycle-involved crashes (**21 serious injuries, 9 fatal**) reported from January 1st, 2018 to December 31st, 2022, in Weber and Morgan County; Source: UDOT.

- Among the total 204 bicycle-involved motor vehicle crashes, 10 to 19 year olds represented 21% of the crashes followed by 40 to 49 year olds at 16%.
  - 30 bicycle-involved severe crashes with 9 fatal and 21 suspected serious injury crashes with 3 (10%) DUI related, 18 (60%) intersection related (with 33% 4-leg intersections and 27% T-intersection), and 2 (7%) distracted driving, and 20% were in dark or dusk conditions.
- Washington Blvd. had the highest concentration of severe bicycle-involved crashes with two fatal and one serious injury.
- Trend: After declining in 2019, bicycle-related severe crashes have increased, averaging 7.6 severe crashes per year from 2020 to 2022.

### 2019 and 2020 Crash Comparison

For the Weber-Morgan Health District the total number of severe motor-vehicle involved crashes increased by 52% from 2019 to 2020 even though the total crashes declined by 20% during the same time period (see Figure 9). The increase in fatal crash events occurred throughout Utah in 2020 due to behavioral changes and an increase in the associated risk factors including: DUIs (27%), unrestrained behavior (36%), speed related



(35%), and distracted driving (38%) with motorcycle and bicycle-involved fatal crash events increasing while the pedestrian-involved fatal crash events declining. For the Weber-Morgan Health District motorcycle, bicycle, and pedestrian-involved fatal crash events all increased from 2019 to 2020.

### Weber and Morgan County Severe Motor Vehicle Related Crashes, 2018-2022

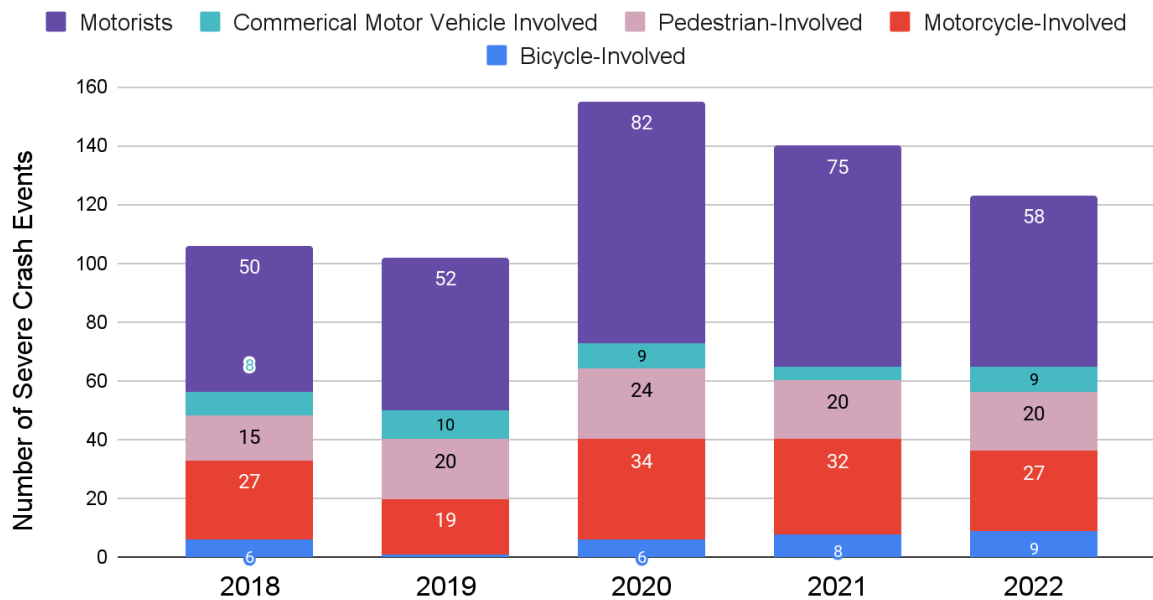


Figure 9: Severe motor vehicle crashes from 2018 to 2022 Weber-Morgan Health District; Source UDOT

## Health Improvement

### What Is Being Done?

The UDHHS Violence and Injury Prevention Program (VIPP) and Utah Highway Safety Office funds the Weber-Morgan Health Department to implement motor vehicle safety programs and Safe Kids Coalition activities within the Weber-Morgan Health District. These programs focus on child passenger safety, seat belt awareness, vulnerable roadway users, and teen driving. Many agencies play a role in the prevention of motor vehicle traffic crash deaths including: the Utah Department of Public Safety, Utah Department of Transportation, Utah legislature, law enforcement, media, vehicle manufacturers, emergency response, and medical treatment.

### Available Services

Weber-Morgan Health Department

Call 801-399-7186 or visit to register for a car seat class.:

<https://www.webermorganhealth.org/classes/car-seat-class/>

Zero Fatalities Program  
<https://zerofatalities.com/>

Utah Highway Safety Office for various safety programs  
Call 801-293-2480  
<https://highwaysafety.utah.gov/>

Utah Safety Council for defensive driving course  
Call 801-262-5400  
<https://www.utahsafetycouncil.org/content/Default.aspx>

**Sources:**

1. Utah Department of Transportation, AASHTOWare Crash Query System

**Notes:**

- The unit of measurement is the fatal and suspected serious injury motor vehicle related crash events. Crash events may include one to 9 vehicles and each event can have more than one fatality or serious injury. For more individual level data and crash rates see the Fatality Analysis Reporting System data from NHTSA: <https://www.nhtsa.gov/research-data/fatality-analysis-reporting-system-fars>
- Find more information on crash data on the Utah Department of Public Safety website crash data and statistics page: <https://highwaysafety.utah.gov/crash-data/>
- The motor vehicle crash report data dictionary can be found here: <https://highwaysafety.utah.gov/wp-content/uploads/sites/22/2021/03/Utah-Crash-Report-Data-Dictionary-2021-v8-030121.pdf>
- 2023 and 2024 data is preliminary and is still being reviewed and validated.
- This data may be protected under 23 USC 407.
- Crash costs values are determined in accordance with NHTSA guidelines and approved by FHWA. For 2023, the total cost of a fatal or serious crash is estimated to be \$3,932,300.